

State of Wyoming Corner Record

(In compliance with the *CORNER PERPETUATION AND FILING ACT*, Wyoming Statutes, 1977 Section 36-11-101, et. seq., and the Rules and Regulations of the Board of Professional Engineers and Professional Land Surveyors)

Reverse side of this form may be used if more space is needed.

Record of original survey and citation of source of historical information (if corner is lost or obliterated). Description of corner monumentation evidence found and/or monument and accessories established to perpetuate the location of this corner. Sketch of relative location of monument, accessories, and reference points with course and distance to adjacent corner(s) (if determined in this survey). Method and rationale for reestablishment of lost or obliterated corner.

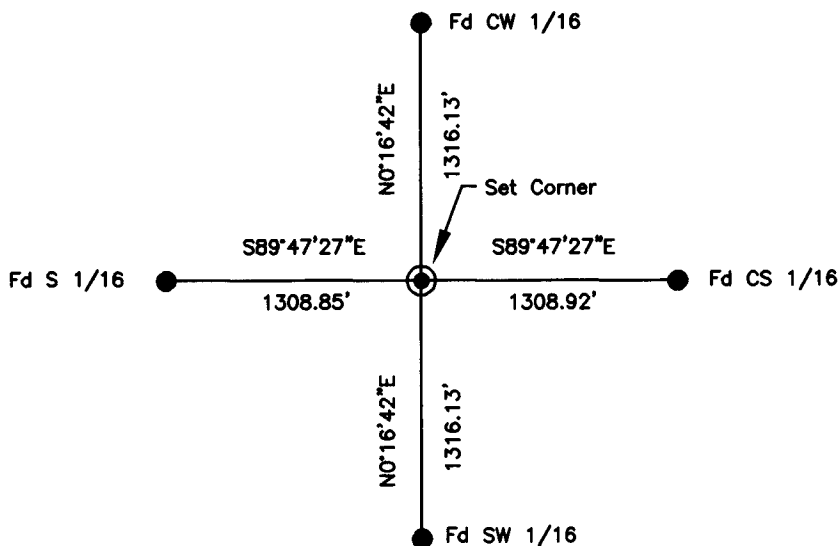
FOUND: NOTHING FOUND

GLO RECORD: NONE

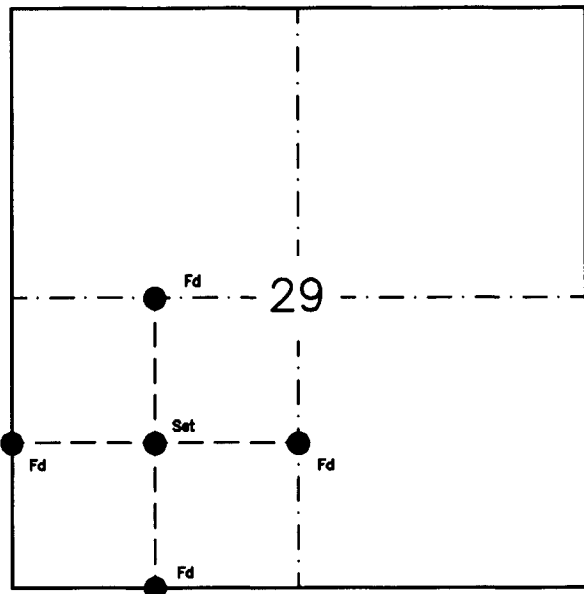
SET: SET BY INTERSECTION
5/8" x 24" REBAR WITH 2"
ALUMINUM CAP STAMPED
APPROPRIATELY.

REFERENCES: TIES TO ADJOINING CORNERS
AS SHOWN

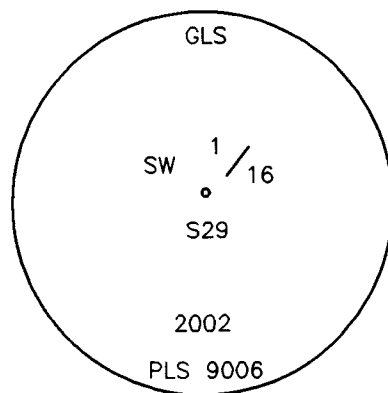
Reference Locations



Monument Location



Monument Inscription



Date of Field Work: 5/22/02

Office Reference: 0059

Cross Index Plat

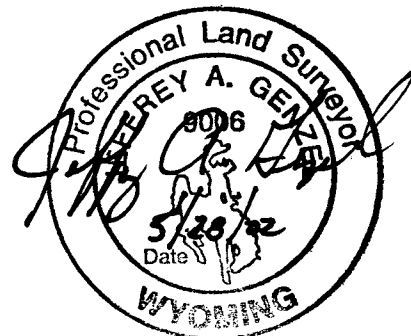
1	2	3	4	5	6	7	8	9	10	11	12	13	14	15	16	17	18	19	20	21	22	23	24	25	
A	+	+	+	+	+	+	+	+	+	+	+	+	+	+	+	+	+	+	+	+	+	+	+	+	A
B	+	6	+	5	+	4	+	3	+	2	+	1	+	C											C
C	+	+	+	+	+	+	+	+	+	+	+	+	+	D											D
D	+	+	+	+	+	+	+	+	+	+	+	+	+	E											E
E	+	+	+	+	+	+	+	+	+	+	+	+	+	F											F
F	+	+	+	+	+	+	+	+	+	+	+	+	+	G											G
G	+	7	+	8	+	9	+	10	+	11	+	12	+	H											H
H	+	+	+	+	+	+	+	+	+	+	+	+	+	I											I
I	+	+	+	+	+	+	+	+	+	+	+	+	+	J											J
J	+	+	+	+	+	+	+	+	+	+	+	+	+	K											K
K	+	+	+	+	+	+	+	+	+	+	+	+	+	L											L
L	+	18	+	17	+	16	+	15	+	14	+	13	+	M											M
M	+	+	+	+	+	+	+	+	+	+	+	+	+	N											N
N	+	+	+	+	+	+	+	+	+	+	+	+	+	O											O
O	+	+	+	+	+	+	+	+	+	+	+	+	+	P											P
P	+	19	+	20	+	21	+	22	+	23	+	24	+	Q											Q
Q	+	+	+	+	+	+	+	+	+	+	+	+	+	R											R
R	+	+	+	+	+	+	+	+	+	+	+	+	+	S											S
S	+	+	+	+	+	+	+	+	+	+	+	+	+	T											T
T	+	30	+	29	+	28	+	27	+	26	+	25	+	U											U
U	+	+	+	+	+	+	+	+	+	+	+	+	+	V											V
V	+	+	+	+	+	+	+	+	+	+	+	+	+	W											W
W	+	+	+	+	+	+	+	+	+	+	+	+	+	X											X
X	+	31	+	32	+	33	+	34	+	35	+	36	+	Y											Y
Y	+	+	+	+	+	+	+	+	+	+	+	+	+	Z											Z
Z	1	2	3	4	5	6	7	8	9	10	11	12	13	14	15	16	17	18	19	20	21	22	23	24	25

Firm/Agency, Address

GENZEL
LAND SURVEYING, P.C.
811 EAST 20TH STREET
CHEYENNE, WYOMING 82009
Ph: (307) 778-9553
Fax: (307) 635-1372

This corner record was prepared by me or under my direction and supervision.

SEAL & SIGNATURE



RECORDED 5/28/2002 AT 8:12 AM REC# 322882 K# 1652 PG# 1162
DEBRA K. LATHROP, CLERK OF LARAMIE COUNTY, WY PAGE 1 OF 1

Corner Name SW1/16 Section 29, T 15 N, R 63 W, 6th P.M.
County: Laramie Wyoming

Cross-Index No.: U-8